



GRADE 8 UNIT 1-5

1.



I do many things with one click on the Internet. For example I love travelling abroad and I need to find cheap tickets. Internet is a good way to find it. Also, I plan my trip through the internet. Before I go abroad, I search about the country and learn their culture and language. I also use the internet to keep in touch with my family and friends.

Which of the following is TRUE according to the text above?

- A. Jack makes travel arrangements on the Internet.
- B. Jack thinks the Internet is a waste of time.
- C. Jack never keeps in touch with his family.
- D. Jack doesn't need cheap tickets.

Answer the questions 2-3 according to the text below.

Healthy Pancake Recipe

- ❖ Mash the banana in a large bowl.
- ❖ Crack the egg and whisk it.
- ❖ Put a glass of almond milk, two tbs of honey and one cup of oatmeal.
- ❖ Mix all the mixture.
- ❖ Heat the pan and place a tsp of coconut oil into the pan.
- ❖ Pour pancake mixture in round circles.
- ❖ Cook for 2-3 minutes on one side. Turn the other side and cook for another 1-2 minutes.
- ❖ Pour honey and put some blueberries on top of the pancake.
- ❖ Serve it warm. Enjoy!



2. After heating the pan, you should _____.

Which of the following completes the sentence above?

- A. cook for 2-3 minutes on one side of the pancake
- B. pour honey and put some berries on top
- C. place a teaspoon of coconut oil
- D. put a glass of almond milk, two tbs of honey and one cup of oatmeal.

3. Which kitchen tool is NOT mentioned in the recipe?



B.



C.



D.



4.



Jane: How is your Spanish course going, Luis?

Luis: Not bad, but the language school closed because of Covid-19. We are learning online nowadays.

Jane: Oh! I see.

Luis: I want to improve it and I need more practice. I want to speak it fluently.

Jane: Why don't you use an application?

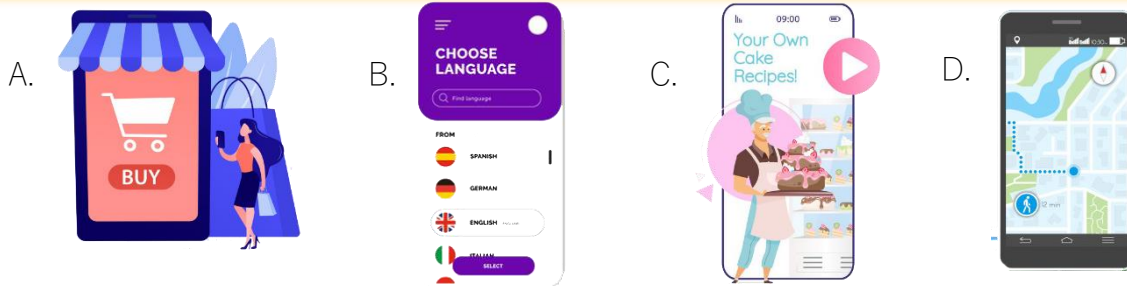
Luis: Hmm, good idea! Do you know any app?

Jane: I will check it and let you know.

Luis: Great, thanks Jane!

Jane: You're welcome.

According to the dialogue, which of the following application can Jane recommend to Luis?



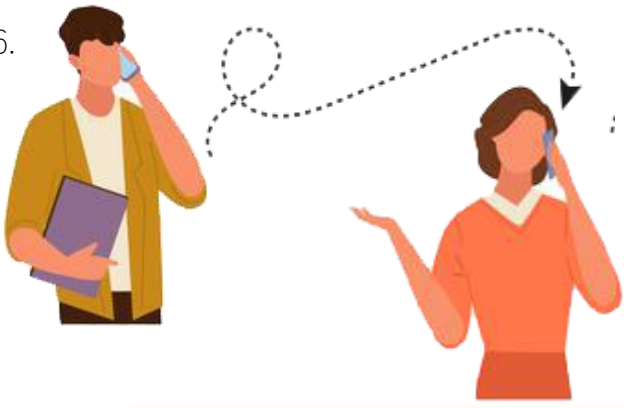
5. Here is the Lucy's daily plan:



Which of the following is TRUE according to the Lucy's plan above?

- A. Lucy doesn't have any plan after 8 p.m
- B. Lucy doesn't get up at seven in the morning.
- C. Lucy finishes her homework before having a dinner.
- D. After doing homework, Lucy watches series and rest.

6.

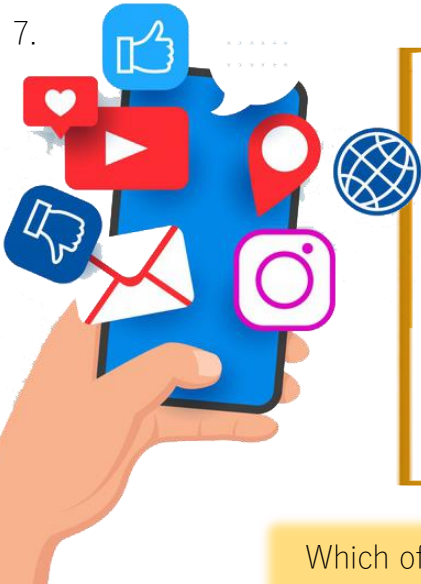


Sam and George are classmates. George calls Sam for the project. Sam's mother picks up the phone and she says Sam isn't at home right now, but George needs to talk with him immediately because it is urgent.

What can George say to Sam's mother according to the text above?

- A. Could you tell him to get me back as soon as possible?
- B. Could you repeat that please?
- C. Can you hold on a moment, please?
- D. Would you like to leave a message for Sam?

7.



Betty: Son, everybody is talking about social networking sites. My friends are using it. I want to see their posts.

Ryan: Mum, first you should create an account.

Betty: Create an account? _____?

Ryan: You should register a social networking sites and then you can check what they share.

Betty: Oh, okay. Let's do it together then.

Which of the following completes the dialogue?

- A. How do you connect to the Internet?
- B. Can you explain it more, please?
- C. Are you an Internet addict?
- D. Which device do you usually use?

8. A music company makes an online survey about popular music genres among teens.

Here are the results:



Which of the following is CORRECT according to the results?

- A. More than half of the teenagers prefer pop music.
- B. %6 of the teens prefer jazz music to classical music.
- C. Rock music is more popular than the other genres.
- D. Less than 8% of the teens prefer rap music.



Bella Bella Boutique

fashion & beauty

Grand Opening

We are opening our new boutique and we would be thrilled to see you at the grand opening.

For more information, contact with Lisa Jerry
0612 983 78 00 - lisajerry@mail.com



Name Street 27/4
APRIL 14TH – 7 p.m

P.S: Children can't join the event

9. Which of the following questions does NOT have an answer in the invitation card?

- A. What time is the grand opening?
- B. What is the date of the event?
- C. How can you get more information about the event?
- D. How much is the fee?

10. Which of the following is TRUE according to the invitation card above?



- A. Everybody can join the event.
- B. The event starts at 9:30 p.m
- C. You can get more information from Lisa Jerry.
- D. The entrance fee is 25\$ per person.

